A decorative graphic on the left side of the slide, consisting of a network of light blue lines and circles that resemble a circuit board or a data network. The lines are vertical and horizontal, with small circles at various points, creating a grid-like structure.

MAC OPERATING SYSTEM OS X EL CAPITAN

DOCK

- Located at the bottom
 - Default location is bottom, can be changed
- Able to customize
- Add Apps
 - Finder/Applications – find app and drag to dock
- Remove App
 - Drag icon of app off the dock
 - Hold for a few seconds



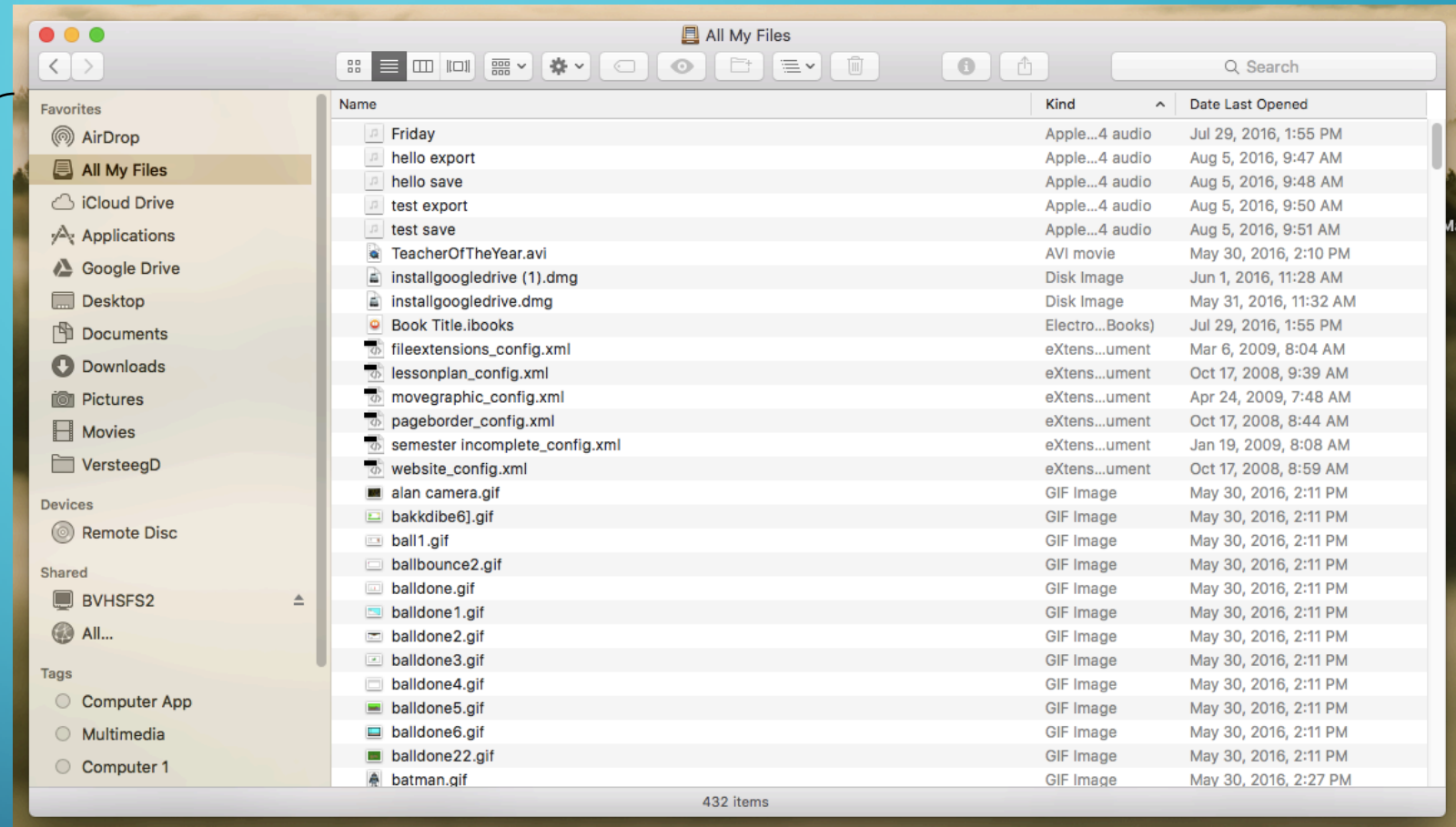
FINDER

- A simple way to access everything on your Mac
 - Start applications
 - Manage your files
 - Open items you have saved
 - Get to the shared drive
- Located on your dock



FINDER

- Sidebar
- Navigate to different locations
- Shared drive



SPOTLIGHT

- Located top right corner
- Use it to search
 - Files
 - Trouble shoot



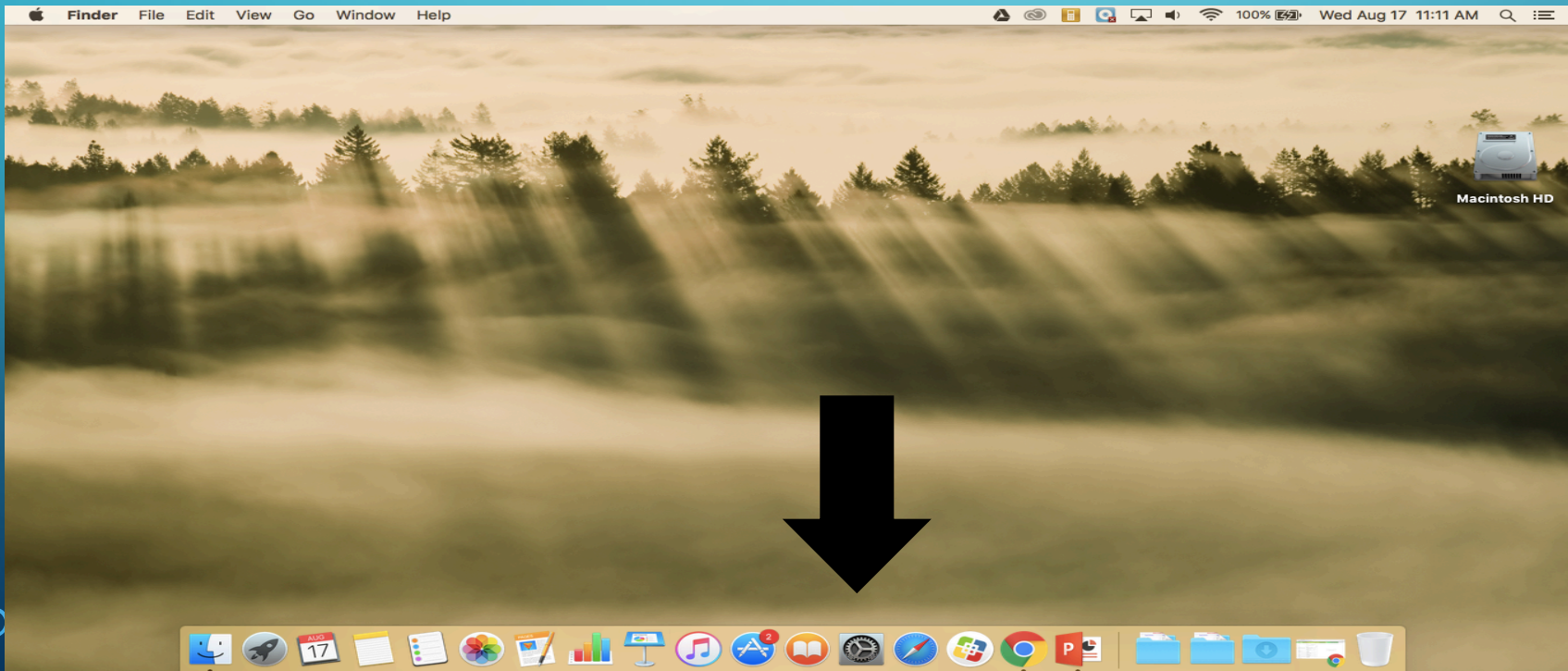
MENU BAR

- Located across the top
- Different for each program you have open

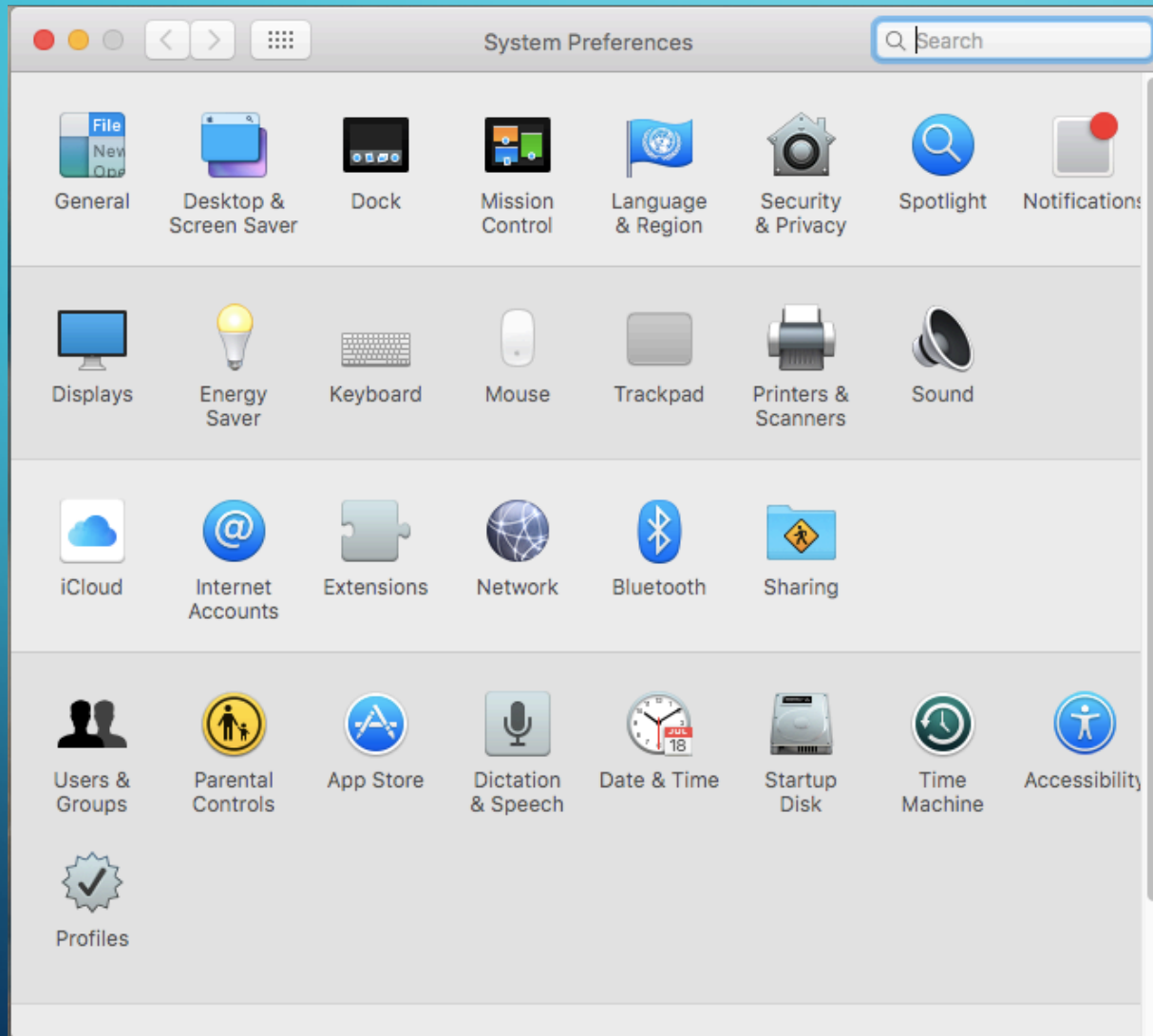


SYSTEM PREFERENCES

- Located in dock
- allows users to modify various **system** settings: screen saver, energy, sound, and more



SYSTEM PREFERENCES



SYSTEM PREFERENCES

1. General – change default web browser to Chrome
2. Desktop & Screen Saver – appropriate
 1. Hot corners – short cuts for your mouse. Move the cursor to a corner of the screen can trigger any number of actions.
3. Dock
4. Display
5. Energy Saver
6. Mouse – change scroll direction
7. Track pad
8. Printers & Scanners
9. Sound
10. Dictation: FN key 2X for dictation (try it)
11. Speech: highlight text, right click, speech, start speaking



LAUNCH PAD

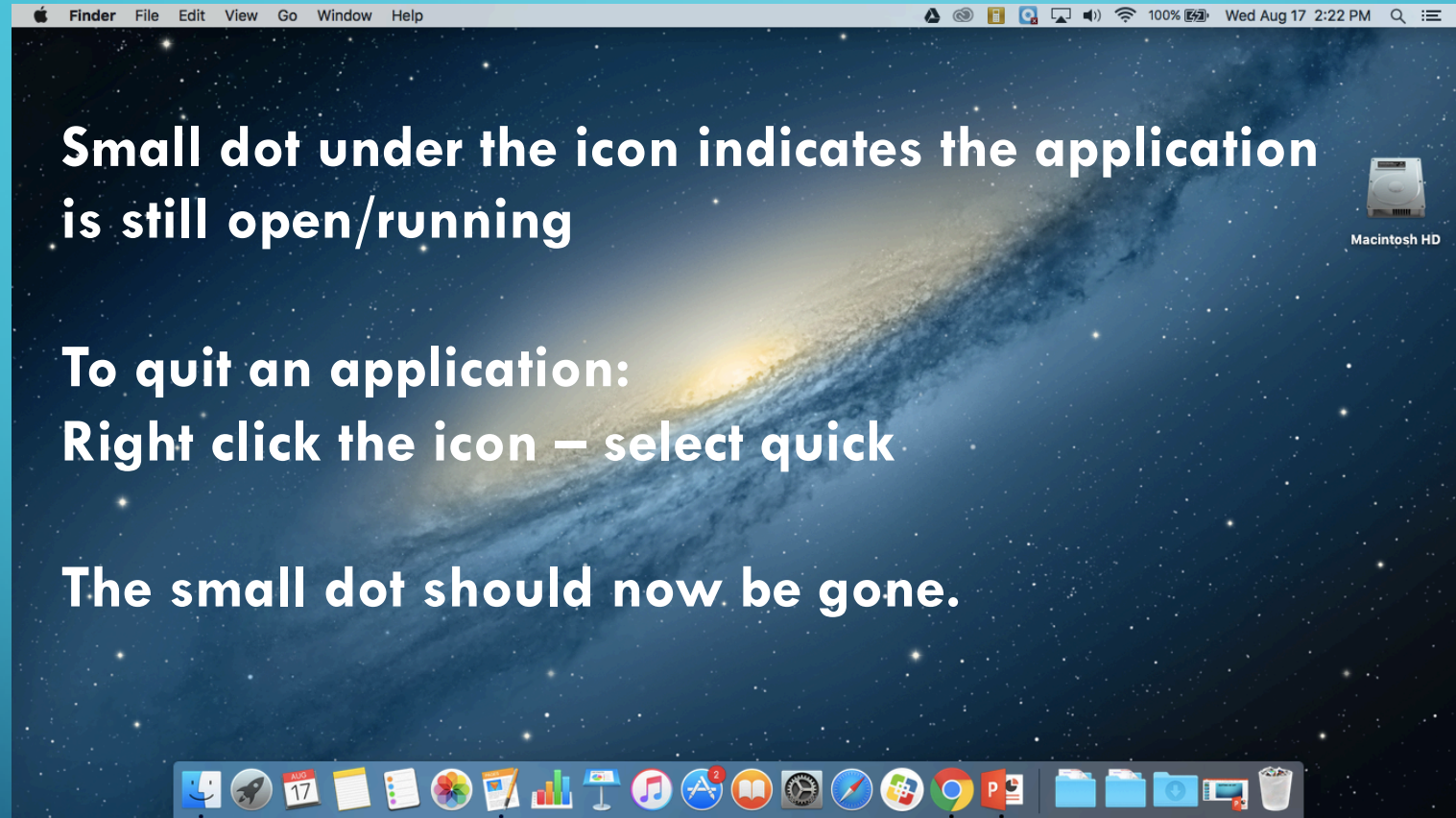
Fast way to find an open apps.



LAUNCH PAD



QUITTING AN APP



CONNECT EMAIL

- Stamp icon
- Optional to connect

SELF SERVICE

- Update apps
- Get apps

HOME WORK – DUE NEXT CLASS PERIOD

- Explore on your own other apps, settings, etc
- Find something that you can share with the class
- What will it be?

- Quiz - coming your way over Mac OS
- Computer App and Computer 1: Copy of this PP is in Schoology
- Multimedia: Link to a copy of the PP on the class website